

Uncovering gender dimensions in energy policy using Natural Language Processing



Assoc. prof. Paula Carroll
Business Analytics and
Operations Research
School of Business



Bhawna Singh
Generative AI, LLM,
Responsible AI
CeADAR



Prof. Eleni Mangina
Data Analytics,
Energy Efficiency,
Applied Ethical AI
School of Computer
Science



Impact:



Spotlight on language usage in
Energy Policy
Corpora of Energy Policy
Vocabulary



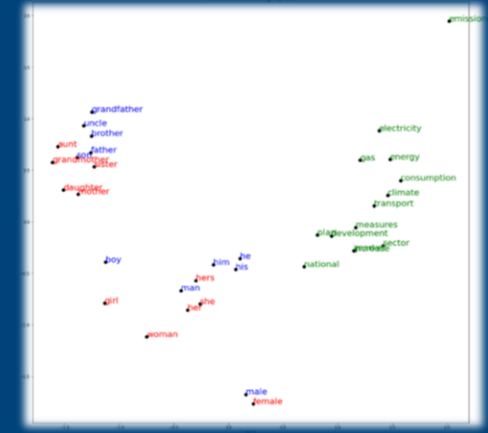
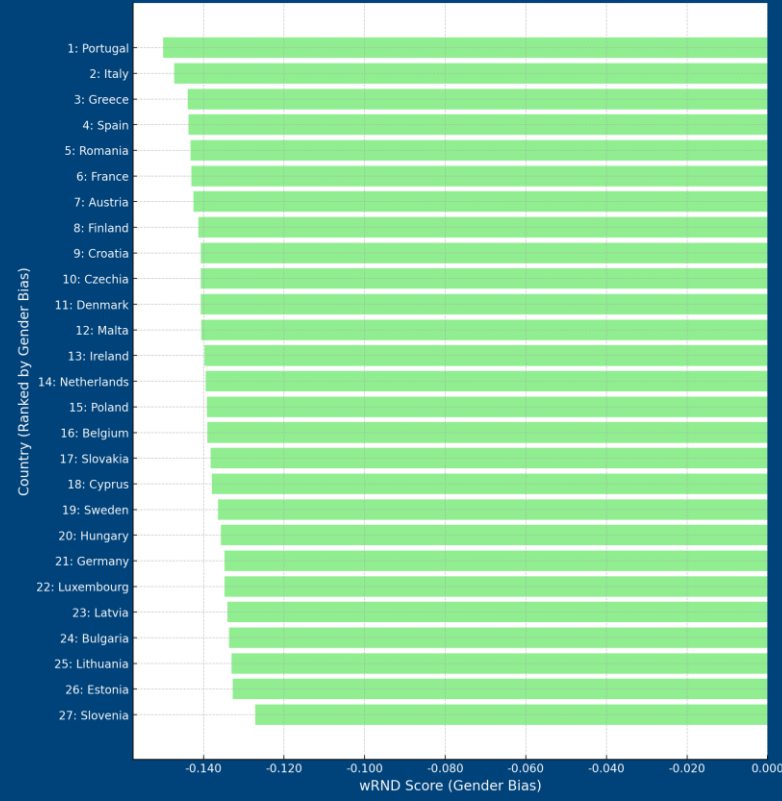
Research Focus:

Clean Energy Transition

Research Question:

Is the language in Energy Policy Documents Gender Neutral?

NECP NLP Gender Bias Rankings by Country

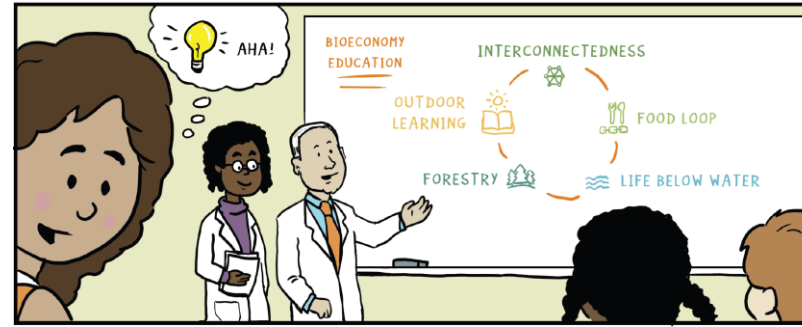


Implementing the BioBeo Gender Action Plan through Events and Learning Resources (www.biobeo.eu)



www.biobeo.eu/project-outcomes

- ❖ Tom Curran (BioBeo Project Leader);
 - ❖ Associate Professor, UCD School of Biosystems and Food Engineering;
 - ❖ Vice Principal for Internationalisation, UCD College of Engineering & Architecture
- ❖ BioBeo Horizon Europe Project
 - ❖ Education for the Bioeconomy
 - ❖ Management structure, work package leaders & deputies, meeting times
 - ❖ Speakers at events
- ❖ Impact
 - ❖ Universal Design for Learning (UDL)
 - ❖ Flexibility and diversity in curriculum and classroom practices
 - ❖ Better & more project outputs



It is time to talk about sex in biomedicine

REMODEL & Dimitrios I. Zeugolis



Cell culture technologies / products sector



Regenerative medicine / tissue engineering sector



Medical devices / biomaterials sector

Case study: Gender mismatch in medical devices

Group	Young's Modulus (KPa)
Porcine male skin	0.63 ± 0.09
Porcine female skin	1.07 ± 0.05
Porcine male tendon	1.31 ± 0.11
Porcine female tendon	2.29 ± 0.12

Group	Biological properties
Porcine male tendon + human male tendon cells	High correlation
Porcine female tendon + human male tendon cells	Low correlation
Porcine male tendon + human female tendon cells	Low correlation
Porcine female tendon + human female tendon cells	High correlation

Impact



Personalised medicine becomes a clinical reality



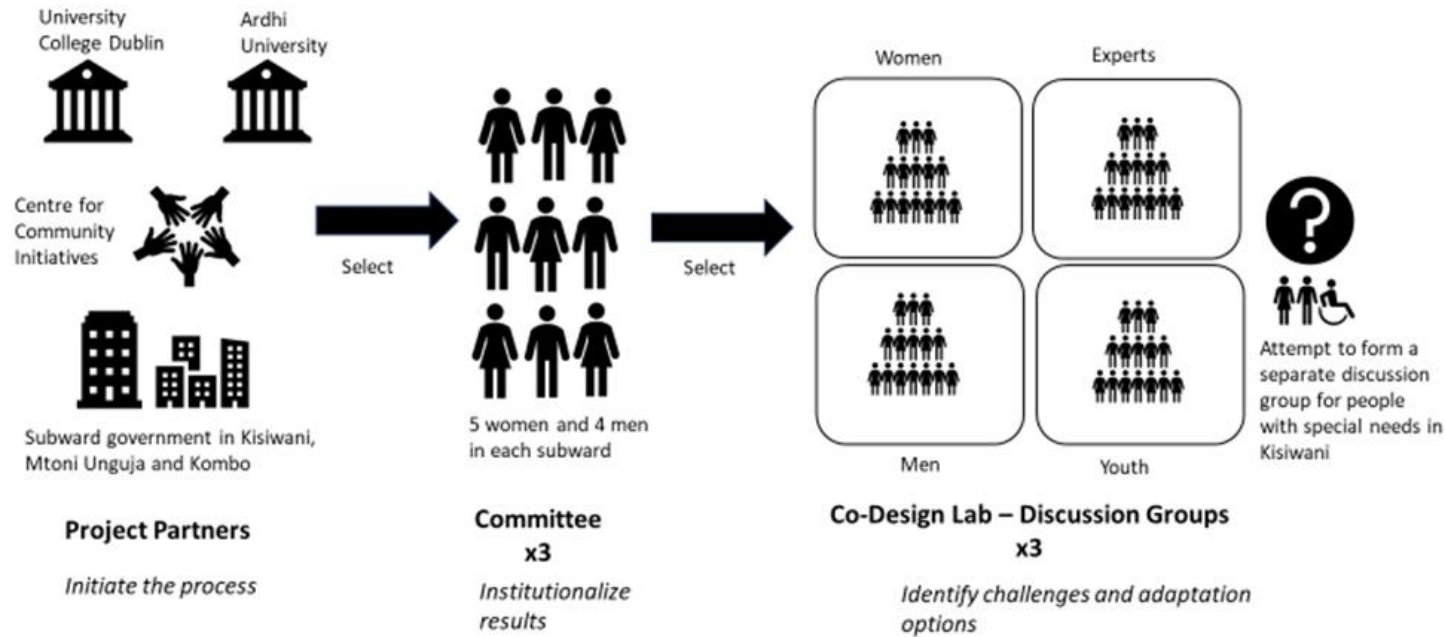
Better patient therapeutic outcomes



Savings for patients and healthcare providers

Integrating Gender Equity in Co-Design Labs for Urban Climate Change Adaptation

The WECOAdapt Co-Design Process



Impact:

- Gender-inclusive toolkit
- Permanent leadership positions for women in climate change adaptation committees
- Findings on women’s perceptions and priorities regarding climate change
- Gender considerations integrated in adaptation pathways



Investigating gender aspects of Ireland's Clean Energy Transition

Gender (socially) disaggregated data

Assess the current collection of gender data across SEAI programmes

Review academic and grey literature for best practices in collecting gender-disaggregated data

Develop a framework for the collection of intersectional gender data to allow for gender responsive evaluation

Dr Dervla MacManus

Research Ireland Public Service Fellow

UCD School of Philosophy

Former architect

PhD Architectural History

IRC Postdoc *Gender Equity in Irish Architecture*



Impact - Mainstreaming of Gender Responsive Evaluation

Public Sector Duty

Section 42 of the Irish Human Rights and Equality Commission Act 2014

EU Frameworks for gender-responsive evaluations

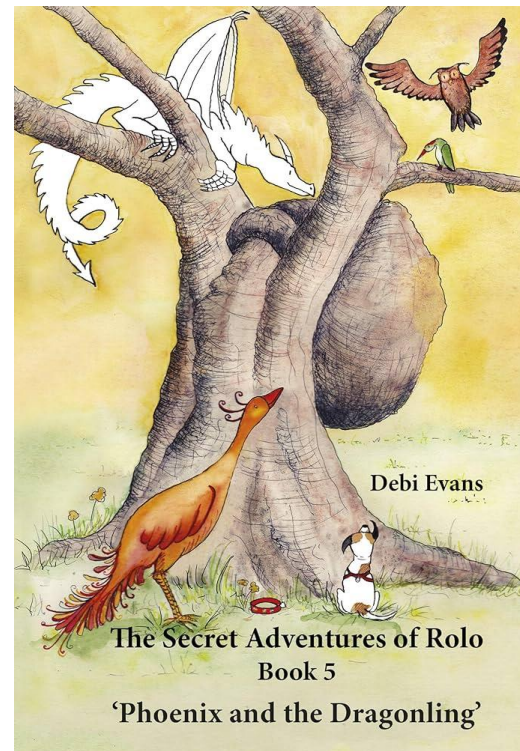
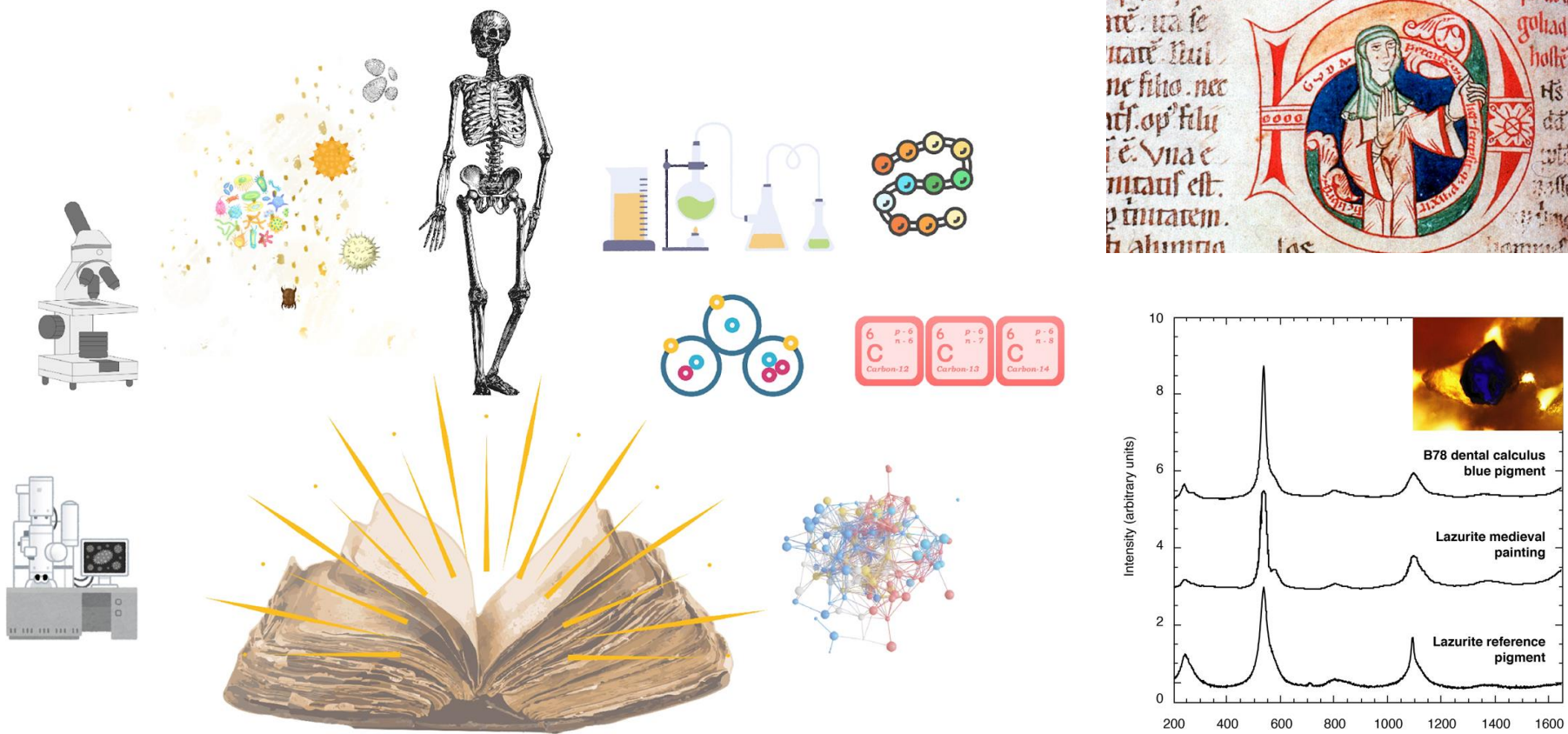
A legal and policy base for the assessment of gender impacts across four frameworks

Woman or Master?

Challenging gender stereotypes through the combined strengths of Archaeology, History and Science



Dr Anita Radini



<https://www.teamnun.org/>

<https://www.science.org/doi/full/10.1126/sciadv.aau7126>